



**MISSIN
MAKE-UP**
m
SPA
AND
BEAUTY

DARTFORD SALON



T- 01322 629501

OAKFIELD LANE
DARTFORD
DA1 2JT

NKC
NORTH KENT
COLLEGE

Experience

Miskin Salon, Spa and Make up studio is a fully operational training establishment where the health and safety of our clients, learner and staff is our priority. Some services are only offered on certain days and times, according to the timetables.

We want you to get maximum benefit from your experience with us at Miskin Spa, Salon and Studio. The general information and guidelines below will help you to achieve this.

> Appointments

On arrival you will be greeted by one of our reception team who will check you in and show you to the waiting area.

Please let us know before your treatment if you have any concerns regarding your health or well-being, medical conditions/ contraindications which may affect or prevent your treatment. In some instances where there are medical conditions we may have to ask you for a doctors letter to confirm the suitability of receiving treatments before any can be performed.

Please note that not all treatments are suitable for all clients and you may be recommended a suitable alternative.

All treatments come with a full consultation to assess your suitability for the service. The member of staff in the salon has the final decision regarding the type and method chosen for your treatment.

Occasionally appointments may be subject to delays or cancellations, in these circumstances we will try our best to notify you as soon as possible. We thank you for your patience and understanding.

Clients must be above the age of 16 and clients are advised that children are not permitted in the salon, spa and studio area.



> Late Arrival

Depending on your arrival time we will determine how much of the service we are able to offer. We will do everything we can to accommodate late arrivals, but in some circumstances appointments may have to be rescheduled.

> Cancellations

If you need to cancel or reschedule your appointment, to avoid disruption to the learners learning, 24 hours' notice is required for cancellations.

> Patch tests

Patch tests are required on certain services including spray tanning, eyelash tinting, brow tinting, eyelash perming, and for temporary and semi-permanent hair colour. An allergy test is required 24-48 hours in advance.

In the rare instance that you may experience a reaction, we ask you to inform us immediately.

> Quiet




To make the most of your time with us and in respect of other guests, please ensure that your mobile phone is switched off during your visit in any of our treatment rooms or spa.

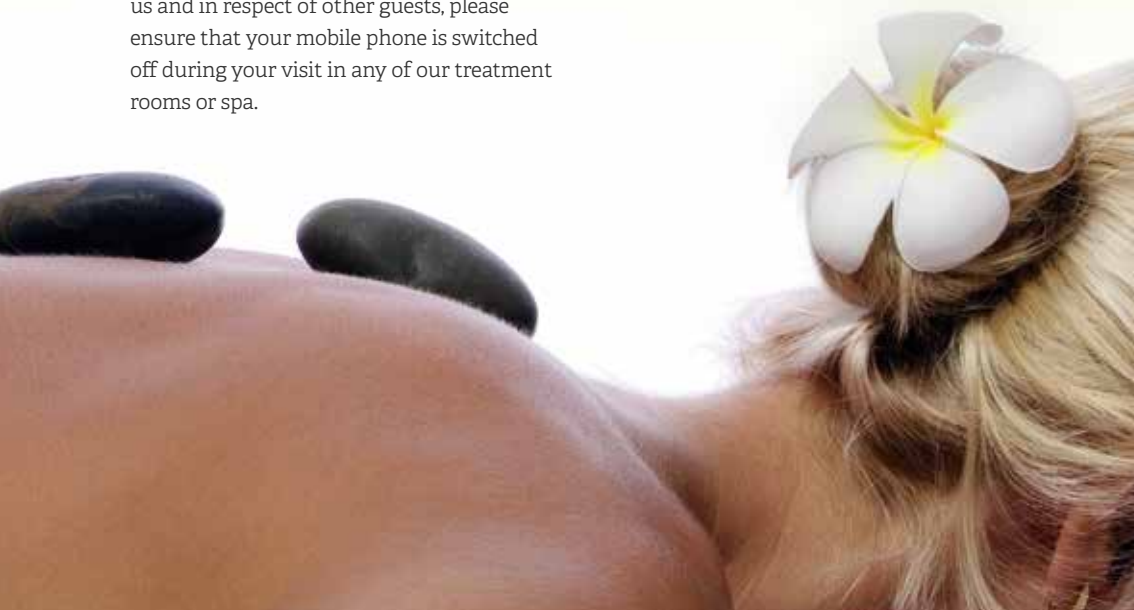
> Feedback

We endeavour to make sure all of our clients receive the very best service and experience possible however whilst our learners are under professional supervision and every effort is taken to meet your requirements, results may vary and may not always meet your expectations. This is reflected in our pricing structure.

Your feedback is extremely important to us. If you would like to share your experiences, offer thoughts and suggestions, we would like to hear from you. You can either speak to a member of the salon team in person or email us at beauty@northkent.ac.uk or makeup@northkent.ac.uk

> Promotions and Events

We regularly hold exclusive events, launch new products and treatments and offer exciting special promotions. Keep up to date by signing up to:   





Feel good treatments...

...Feel good prices.

Our Level 1 Services

> Mini Manicure

In a hurry but still want your nails to look good? Then a mini manicure is what you need which is a cut, file, basic cuticle work and polish.

£3.00



> Mini Pedicure

Consists of a nail cut and file, basic cuticle work, a refreshing peppermint foot soak to wake up your tired feet, finished with a coloured polish.

£3.00



> Make up Application

Let our beauty consultants design a make-up that will fit any occasion.

£3.00



> Nail Art

Mini Manicure with nail art. Why not let your nails do the talking and try one of our many designs to brighten up your look.

£3.50





Our Level 2 Services

The staff & learners of North Kent College offer a friendly & professional service. Why go anywhere else?



> Waxing

This warm wax method is used for quick and hygienic removal of unwanted hair from almost any part of the body leaving the body smooth for up to six weeks.

- Full leg Wax **£7.00**
- Half leg wax **£4.50**
- Bikini line **£3.50**
- Under arm **£3.00**
- Eyebrow **£2.50**
- Upper lip/Chin **£2.50**

> Eye Treatments

Your eyes are gorgeous, and your lashes too. But imagine what professional eyelash tinting and eyebrow tinting will do for the depth and colour of your eyes and the definition of your face.

- Eye lash tint **£6.00**
- Eyebrow tint **£4.50**
- Eyebrow shape **£3.50**
- Strip lashes **£3.00**
- Individual lashes **£5.00**
- Perming **£10.00**

> Make-up application

Application to best suit your needs. Choose from day, evening or special occasion.

£10.00

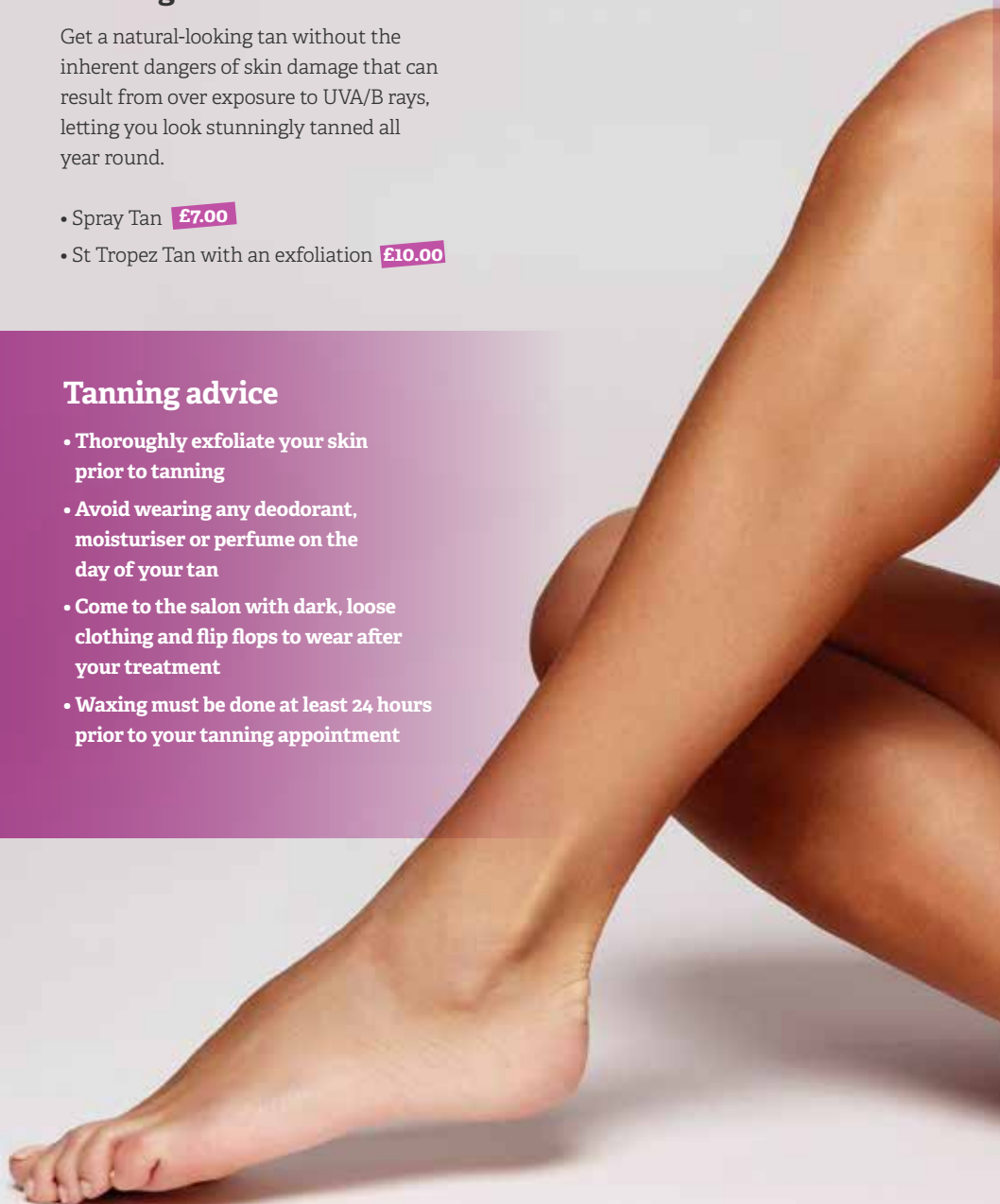
> Tanning

Get a natural-looking tan without the inherent dangers of skin damage that can result from over exposure to UVA/B rays, letting you look stunningly tanned all year round.

- Spray Tan **£7.00**
- St Tropez Tan with an exfoliation **£10.00**

Tanning advice

- Thoroughly exfoliate your skin prior to tanning
- Avoid wearing any deodorant, moisturiser or perfume on the day of your tan
- Come to the salon with dark, loose clothing and flip flops to wear after your treatment
- Waxing must be done at least 24 hours prior to your tanning appointment







> Nails

OPI is renowned globally for its Nail Lacquers – a brilliant, chip-resistant, professional formula.

> Pedicure

Includes cut, file, cuticle work, exfoliation, foot massage, heated treatment & polish.

£8.50

> Manicure

Includes file, cuticle work, exfoliation, hand massage, heated treatment & polish.

£7.50

> Nail Art

A fun way to add some glamour to your hands or feet.

£3.00

Facials

> The Dermalogica Face Treatment

This treatment is truly revolutionary because it's customised at every step to each individual client, providing great results. Each treatment includes professional double cleansing, exfoliation, extractions (as needed), facial massage, masque, toner and skin protection.

£10.00





Men's Skincare

> Deep cleansing Men's Facial

Skin will be resurfaced and dead skin layers removed; blocked pores will be decongested while targeting the repair of redness and irritation caused by shaving. **£10.00**

Eve Taylor offers the benefits of the Essential oils in their range of skincare and body care products for all skin conditions and for men and women. Eve Taylor do not use ingredients such as artificial colours or fragrances and well as other known irritants which can sensitise the skin, including alcohols, formaldehyde, petrochemicals, or phthalates alongside other ingredients that can be comedogenic (pore blocking) and they are not tested on animals either.

Eve Taylor
— LONDON —
AROMATHERAPY SKIN AND BODYCARE

Level 3 Diploma in Body & Spa Therapy

Body Treatments

> Swedish Body Massage

Relieve muscular tension, reduce aches and pains, improves circulation, aids relaxation and reduce stress levels. The massage includes the use of the forearm.

£10.00

> Infra-Red

Promotes relaxation, relieves pain and tension, increase circulation, used as pre-heat treatment can make following treatments more effective and aids absorption of certain products.

£2.00

> Pre Blend Massage

A full body massage with the use of Aromatherapy oils that has the added benefit of the healing effect of essential oils which are blended with the base/ carrier oil that is used for the massage treatment.

Choose from:

Relaxation, Sense of Well-being, Joint and muscle pain, Invigoration and Uplifting.

£12.00

> Micro - current Body

With micro-current therapy, the muscles and tissues in the area are stimulated to tighten and tone.

£10.00

> High Frequency back facial

Back facials can be super effective in cleansing those pesky problem areas, helping to reduce the appearance of back acne, clogged pores and dehydrated skin. Similar to a regular facial, techniques include cleansing, exfoliation, extractions, mask and massage, all of which can clear impurities and aid the renewal of healthy collagen. Isn't it time you gave your back the attention it deserves?

£10.00



> Body vacuum Suction

Vacuum suction is aimed at improving blood flow and Lymph circulation. Lymph fluid transports metabolic waste and fatty materials via the lymph nodes and lymphatic system.

£10.00

> Body Faradic

Well known as electrical muscle stimulation, this treatment is used to tone and tighten the muscles of the body.

£5.00

> G5 Vibratory Massage

A deep tissue massage using a mechanical massager to ease muscular tension and stimulate the circulation. This relaxing yet re-vitalising treatment improves the appearance and tone of the skin, smoothes the contours of your silhouette and aids in the removal of toxins. This specialised massage penetrates deep into the subcutaneous layers so helping to disperse fatty deposits and reduce the appearance of cellulite.

£10.00

> Galvanic Body

Galvanic treatments for Cellulite incorporate a low current that will break up the fluid and fat cells increasing the movement of the Lymphatic system.

£5.00



Electrical Facial Treatments

> Facial Vacuum Suction

Vacuum suction is aimed at improving blood flow and Lymph circulation.

> Facial micro current

This is a facial to redefine the neck & face contours and give them a lifting & strengthening effect.

> High Frequency Indirect

The treatment helps increase blood circulation, increases your sebaceous glands which produce sebum/oil on your skin, it will improve your skin texture and soothe your nerve endings.

> High Frequency Direct

This direct current helps dry out spots and has an antibacterial effect, so is good for oilier skins or those with a few specific acne blemishes.

> Galvanic Iontophoresis

Ideal for all skin types, iontophoresis will treat your specific skin type.

> Galvanic Desincrustation

Softens and cleanses skin, removes waste products, stimulates blood circulation, improve colour of sallow skin, increases cell metabolism. Used on oily, seborrheic and sluggish skins.

- Single facial **£15.00**
- Combination of two **£20.00**

> Facial Faradic

Faradic facial treatment firms facial muscles, improves skin lustre, energises tired skin encouraging cellular regeneration.

£15.00



Dry Spa Treatments

We offer a wide range of body treatments that utilise mud, salt and seaweed blends to give you the best possible results. Whether your aim to have silky smooth skin, lose a few inches before a special occasion, help reduce cellulite or have a complete body detox... we have a treatment for you. The Spa Find brand is a top quality and exclusive brand used by over 1500 spas, health farms and beauty clinics worldwide such as Ragdale Hall, Nirvana Spa, Stobo Castle, Kalmora Spas.



> Spa Find Heavenly Hydration Salt Brushing Treatment

This luxury full body exfoliation revitalises the body and mind, leaving the skin soft and smooth, using 100% natural Dead Sea salt, packed full with healing minerals. Other ingredients include Vitamin E and Coconut Oil to nourish and invigorate the body as it is lightly polished from head to toe. To finish the treatment we smother your skin in warmed body lotion to massage your senses.

£12.00

> Spa Find Infinite Indulgence Black Mud Envelopment

This calming full body treatment nourishes the skin and relaxes aching muscles and joints. A full body exfoliation is followed by the application of warm Dead Sea Mud. We then envelop your body in heated original Dead Sea Mud to soften, soothe and condition the skin with rich minerals from the lowest place on earth. This luxury spa treatments ends with a heavenly scalp massage.

£15.00

> Spa Find Marine Miracle Firming Wrap

Marine Miracle tones and firms the skin, improves cellulite and nourishes the skin. The treatment begins with a luxury exfoliation followed by Algimud Dead Sea Mud and Seaweed mask.

A personalised treatment designed to revitalise specific problem areas. This modelling mask uses a unique formulation of seaweed, Dead Sea Mud and plant extracts, which have combined powerful effects to eliminate cellulite and tone the body contours. An exfoliation ritual to invigorate the localised area begins the treatment, followed by an application of caffeine-rich extracts and specialised massage techniques to help with deep penetration of the active ingredients, which work together to stimulate, detoxify and firm the body.

£20.00

> Spa Find Sculpted Silhouette Inch wrap Treatment

The ultimate combination of plant extracts and Dead Sea minerals makes this a powerful detoxifying body treatment. Your skin is deeply polished with a luxurious sand exfoliant and six different stimulating products before your body is cocooned in comforting wrap. The active marine ingredients work to stimulate cellulite and toxins, easing the inches away and leaving you with an improved body contour.

£20.00

Spa

The Spa experience includes the use of the sauna, steam and Vichy shower 30 mins

£10.00

This is a great way to unwind and melt away tension and stress and is a perfect accompaniment to one of our spa body treatments.

The heat from a sauna soothes your nerve endings and warms and relaxes muscles, in turn relieving the tension from your body and minimizing joint pain.

The steam room helps to open up airways which improves your breathing and alleviates congestion. The steam also assists with the body's detoxification process.

A Vichy shower includes five to seven shower heads that are placed in a row over a cushioned table. During the treatment, a client lies on a cushioned table while water showers the body. The use of the Vichy shower assists with the improvement of the body's blood and lymphatic circulation, relaxing and detoxifying the body.

Please note that swim wear must be worn at all times when using the spa facilities and flip flops must also be used.

Spa Packages

Spa packages prices available upon request, spa packages are regularly updated, contact us for more information

Entry to the Spa (Sauna, Steam, Vichy shower) is included within the Spa packages.

Level 2 Diploma in Hair and Media Make up

> Eye treatments

Your eyes are gorgeous, and your lashes too. But imagine what professional eyelash tinting and eyebrow tinting will do for the depth and colour of your eyes and the definition of your face.

- Eye lash tint **£6.00**
- Eyebrow tint **£4.50**
- Eyebrow shape **£3.50**
- Strip lashes **£3.00**
- Individual lashes **£5.00**

> Tanning

Get a natural-looking tan without the inherent dangers of skin damage that can result from over exposure to UVA/B rays, letting you look stunningly tanned all year round.

- Crazy Angel Spray Tan **£7.00**
- St Tropez Tan with an **£10.00**
exfoliation

> Make up application

Application of day, evening or special occasion make up to enhance and define your features.

£5.00

> Photographic Make-up

Applying make-up for a photo shoot is not the same as applying it for a daytime or evening look. The lighting for photography is typically much brighter and the shadow formations can be very different. Every aspect requires consideration, and careful preparation is vital to a flawless look for photography. Let us apply your make up for that special occasion.

£5.00





Within the Miskin Hair and Make up Studio we pride ourselves in the use of L'Oreal Professionnel products for colour and styling.

L'Oreal Professionnel is a global brand leader in its market, with an exclusive presence in hairdressing salons.

L'Oreal is constantly connected to fashion. Supporting over 800 fashion shows worldwide, including some of the most renowned designers in the Fashion Weeks of Paris, Milan, London and New York.

L'Oréal Professionnel inspires salon trends and helps hairdressers recreate the on-trend looks.

L'Oréal Professionnel is also committed to developing high-quality, environmentally friendly products.



> Body Art:

Face, Arm, Lower Leg,
Shoulder

£3.00

> The Art of Colouring Hair

• Temporary colour

£4.00

• Semi-permanent colour

£5.00

> The Art of Dressing Hair

• Blow dry

£5.00

• Finger dry

£2.00

• Wet set with pin curls

£2.00

• Long hair up

£4.00

Level 3 Advanced Technical Diploma in Media Make up Artistry

> Fashion and Photographic Make-up

Our learners have explored different looks within media to include high fashion, commercial, editorial, catwalk, fashion shows, photographic, TV, film and high definition make up.

Whichever media look you are aspiring to, we can cater to your needs.

£6.00

> Specialist Bridal Hair and Make-up

Our learners have explored different hair and make-up themes, culture and beliefs that will influence the bridal hair and make-up look. Our learners can create themes such as; colour coordinated weddings, sci-fi, fantasy, fairy tale, gothic, vintage, winter wedding and Romany wedding to name just a few.

£6.00

> Avant garde Hair and Make-up

Our learners have explored the concept of avant-garde make-up and hair; dramatic, extreme, bold, creative, expressive, experimental, outside of the box and pushing boundaries.

Are you brave enough?

£6.00

> Media Make-up with creative hair design

Our learners have learnt to experiment with hair and materials in an innovative way, using inspiration and ideas to create hairstyles that depict eras, characters and shapes that may be used within the hair and media make up artistry.

£6.00

> Camouflage Make-up

Our learners have learnt the art of camouflage make up to cover conditions such as; hyper/hypopigmentation, erythema, scar tissue, birth marks, tattoos, dilated capillaries, freckles, moles and under eye dark circles.

£3.00

> Apply Body Art

Our learners have learnt to create body art themes such as fantasy, tribal, futuristic, underwater, outer space, flowers and statues.

Our learners can create a look for your special occasion to the torso, limbs, face and neck.

£6.00



Level 3 Advanced Technical Diploma in Theatrical, special effects & Media Make up Artistry

> Cutting & styling techniques for performers

Our learners have learnt to design, style and dress a performers hair into the look of a character role.

£6.00

> Avant garde Hair and Make-up

Try something different, bold and creative, push the boundaries with a dramatic new look.

£6.00

> Special effects make-up

Special effects make-up for film. TV and theatre? Going to a fancy dress party and want to blow everyone away? Or do you need something specialist in HD make-up, prosthetics or even character make-up.

£10.00

> Apply Body Art

Our learners have learnt to create body art themes such as fantasy, tribal, futuristic, underwater, outer space, flowers and statues.

£6.00

> Camouflage Make-up

Specially made make-up can help hide scars and marks hypo-pigmentation, erythema, scar tissue, birth marks, tattoos, dilated capillaries, freckles, moles and under eye dark circles.

£6.00







www.northkent.ac.uk